

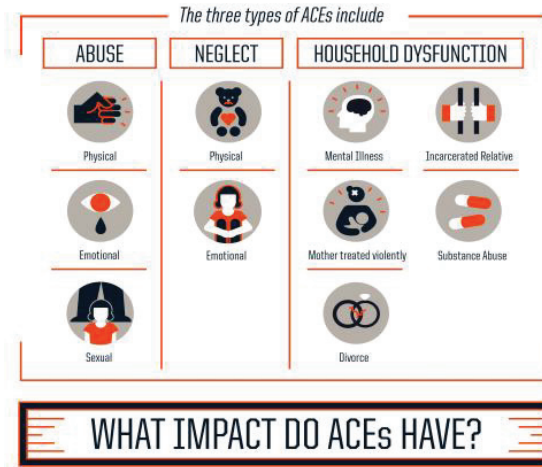
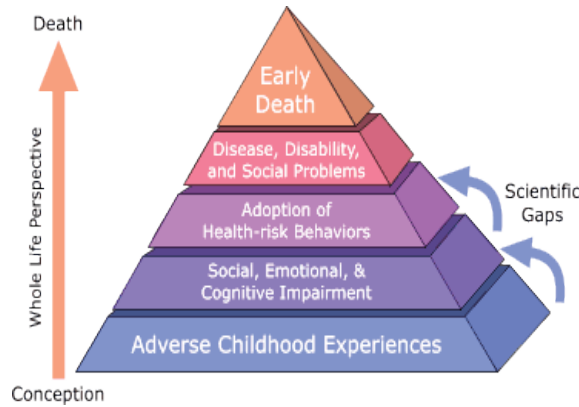
# MISSION AND VISION STATEMENTS

## Mission

Committed to developing trauma informed and resilient communities that is focus on preventing adverse childhood experiences (ACE). And building vision based communities.

## Vision

Creating communities that has the capacity to address traumatic experiences, so that all stakeholders can enjoy a better quality of life.



# LEGACY OF LEGENDS CDC

## BUILDING RESILIENCE IN COMMUNITIES

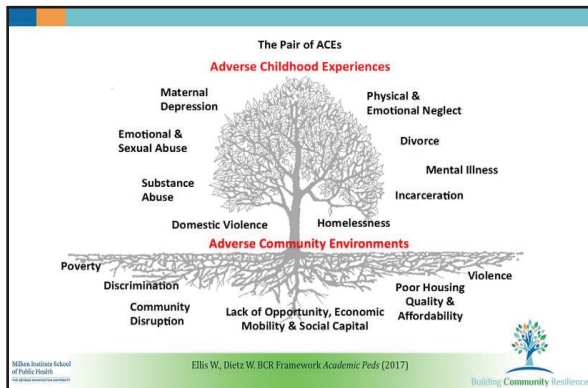


LEGACY OF LEGENDS CDC



2025 Clifton Ave.  
Memphis, TN 38127





## Our Service Model

Legacy of Legends CDC provides holistic highfidelity wraparound 2-Generation Approach through our Legacy Family Connect Centers (LFCC) to help children and parents to overcome traumatic experiences and other adverse experiences.

We utilize a three-part strategy to significantly reduce ACEs, gang and youth violence, family violence, and poverty in Memphis communities.

1. ACE-Based Prevention
2. Intervention, Treatment, and Response
3. Supplemental Supportive Response Services

Our approach is effective because we focus on building Natural Community Supports by developing genuine relationships with our 7Ps (Parents, Pastors, Principals, Police, Politicians, Proprietors, and Partners) in our communities.

Our model of work is being duplicated by the RotaryFamily Youth Initiative in other cities across Tennessee and Mississippi.



## Some of our core partnerships are:

- ◆ University of Tennessee Health Science
- ◆ Ascent Health
- ◆ Alliance Health Services
- ◆ Youth Village
- ◆ Cherokee Health System
- ◆ Impact Church
- ◆ Rotary-FYI/ Northwest Shelby County Rotary
- ◆ MPD Austin Peay Station/ DA Office

## Programs We Offer children 5-17 and their families.

- ◆ Wraparound Frayser
- ◆ Shelby Connect
- ◆ Legacy Family Connect Why are we needed?

The city of Memphis has a poverty rate of 26.9%. Child poverty is 44.7% and black children is 48.9%. Memphis has reverted to being the poorest MSA with a population over a million people. (UofM report)

## We believe in addressing the root causes of adverse childhood and community trauma

Adverse childhood experiences (ACEs) are traumatic events occurring before age 18. ACEs include all types of abuse and neglect as well as parental mental illness, substance use, divorce, incarceration, and domestic violence. A landmark study in the 1990s found a significant relationship between the number of ACEs a person experienced and a variety of negative outcomes in adulthood, including poor physical and mental health, substance abuse, and risky behaviors.

The more ACEs experienced, the greater the risk for these outcomes. By definition, children in the child welfare system have suffered at least one ACE. Recent studies have shown that, in comparison to the general population, these children are far more likely to have experienced at least four ACEs

## CONTACT US

Legacy of Legends CDC  
2025 Clifton Ave. Memphis, TN 38127

LegacyOfLegendsCDC@gmail.com  
www.legacyoflegendscdc.com  
901-236-4604